

## Sandwich, Turkey Ham & Cheese on Round Bun, WG, 4.45oz, IW

### Product Details:

Item Number: 602193

Pack Size: 48/4.45 oz.

Serving Per Case: 48

Net Weight: 13.5 lbs.

Kosher: No

Meal Contribution: 2 M/MA, 2 GRN

Class: Always Available

Shelf Life: 12 Months Frozen; 5 Days Refrigeration

Temperature Class: Frozen

Cook State: Fully Cooked

GTIN-12 UPC:

GTIN-14: 0 20018 00113 4

Sales Price Per EACH: N/A

Case Price: N/A

## Nutrition Facts

This is a representation of the nutritional label. The nutritional label on the product may vary.

Serving Size 4.45 oz.

Amount Per Serving

Calories 290

% Daily Value \*

Total Fat 10g 12%

Saturated Fat 3g 15%

Trans Fat 0g

Cholesterol 40mg 13%

Sodium 930mg 40%

Total Carbohydrate 29g 10%

Dietary Fiber 2g 7%

Total Sugars 5g

Incl. Added Sugars 5g 10%

Protein 20g

Vitamin D 0%

Calcium 187mg 15%

Iron 3mg 20%

Potassium 369mg 8%

\* The % Daily Value tells you how much a nutrient in a serving of food contributes to a daily diet. 2,000 calories a day is used for general nutrition advice.

### Ingredients:

WHOLE GRAIN ROUND BUN: WHITE WHOLE WHEAT FLOUR, ENRICHED FLOUR (WHEAT FLOUR, MALTED BARLEY FLOUR, NIACIN, IRON, THIAMIN MONONITRATE, RIBOFLAVIN, FOLIC ACID), WATER, HIGH FRUCTOSE CORN SYRUP, YEAST, WHEAT GLUTEN, SOYBEAN OIL, CONTAINS 2% OR LESS OF THE FOLLOWING: SALT, HONEY, INVERT SUGAR, CORN SYRUP, WHEAT STARCH, MOLASSES, SODIUM STEAROYL LACTYLATE, VINEGAR, CALCIUM PROPIONATE (PRESERVATIVE), CALCIUM SULFATE, ASCORBIC ACID, AMMONIUM SULFATE, CITRIC ACID, ETHOXYLATED MONO- AND DIGLYCERIDES. TURKEY HAM: TURKEY THIGH, WATER, ISOLATED SOY PROTEIN, SALT, SUGAR, LESS THAN 2 % POTASSIUM LACTATE, SODIUM PHOSPHATE, POTASSIUM ACETATE, SMOKE FLAVORING, SODIUM NITRITE, SODIUM ERYTHORBATE. YELLOW AMERICAN CHEESE REDUCED FAT & SODIUM: CULTURED SKIM MILK AND MILK, POTASSIUM CITRATE, SODIUM CITRATE, PAPRIKA AND ANNATTO (COLOR), SALT, ENZYMES, SORBIC ACID (PRESERVATIVE), SUNFLOWER LECITHIN (ANTI-STICKING AGENT).

### Allergen Statement:

Wheat, Soy and Milk

### Benefits and Suggested Use:

Individually wrapped, perfect on the go!

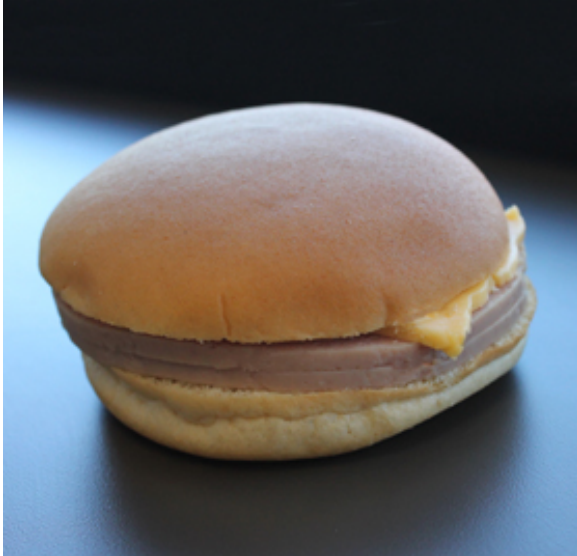
### National Food Group

Email: info@nationalfoodgroup.com . Direct: 800.886.6866

Fax: 248.669.3000

46820 Magellan Dr., Suite A, Novi, MI 48377-2454

www.nationalfoodgroup.com . Call Toll Free: 800.886.6866



## Sandwich, Turkey Ham & Cheese on Round Bun, WG, 4.45oz, IW

---

### Preparation and Additional Information:

#### Instructions for Preparation and Cooking:

Ready To Eat. Thaw in refrigerator overnight. Keep Refrigerated. Remove from package if heating in oven.

### Logistics Information:

**Gross Weight:** 14.4 lbs

**Case Dimensions:** 17.25 X 9.75 X 9.5

**Pallet Count:** 40

**Double Stack:** Yes

**Cube:** 0.925

**Block and Tier:** 10 and 4

The information provided above is, to the knowledge of National Food Group, true and accurate based on information provided to National Food Group; provided that National Food Group does not make any express or implied warranties with respect to any such information shall have no liability for any inaccuracies contained in any such information.

---

#### National Food Group

**Email:** [info@nationalfoodgroup.com](mailto:info@nationalfoodgroup.com) . **Direct:** 800.886.6866

**Fax:** 248.669.3000

46820 Magellan Dr., Suite A, Novi, MI 48377-2454

[www.nationalfoodgroup.com](http://www.nationalfoodgroup.com) . **Call Toll Free:** 800.886.6866